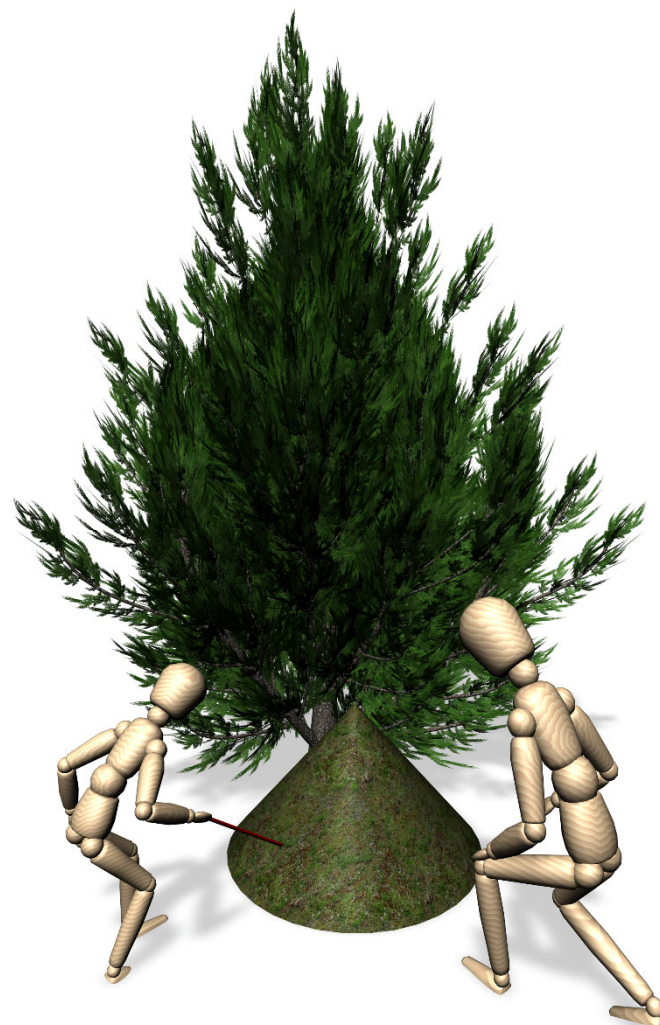


Safe to Play –training program and S2P-certification

- Trainings for different professions about safety of playgrounds and recreational sports areas.
- Internationally acknowledged certification for competence.



Training levels



Basic level

Day 1: Operational inspections and maintenance

Day 2: Requirements in the standards

Day 3: Designing layouts

Day 4: Area management

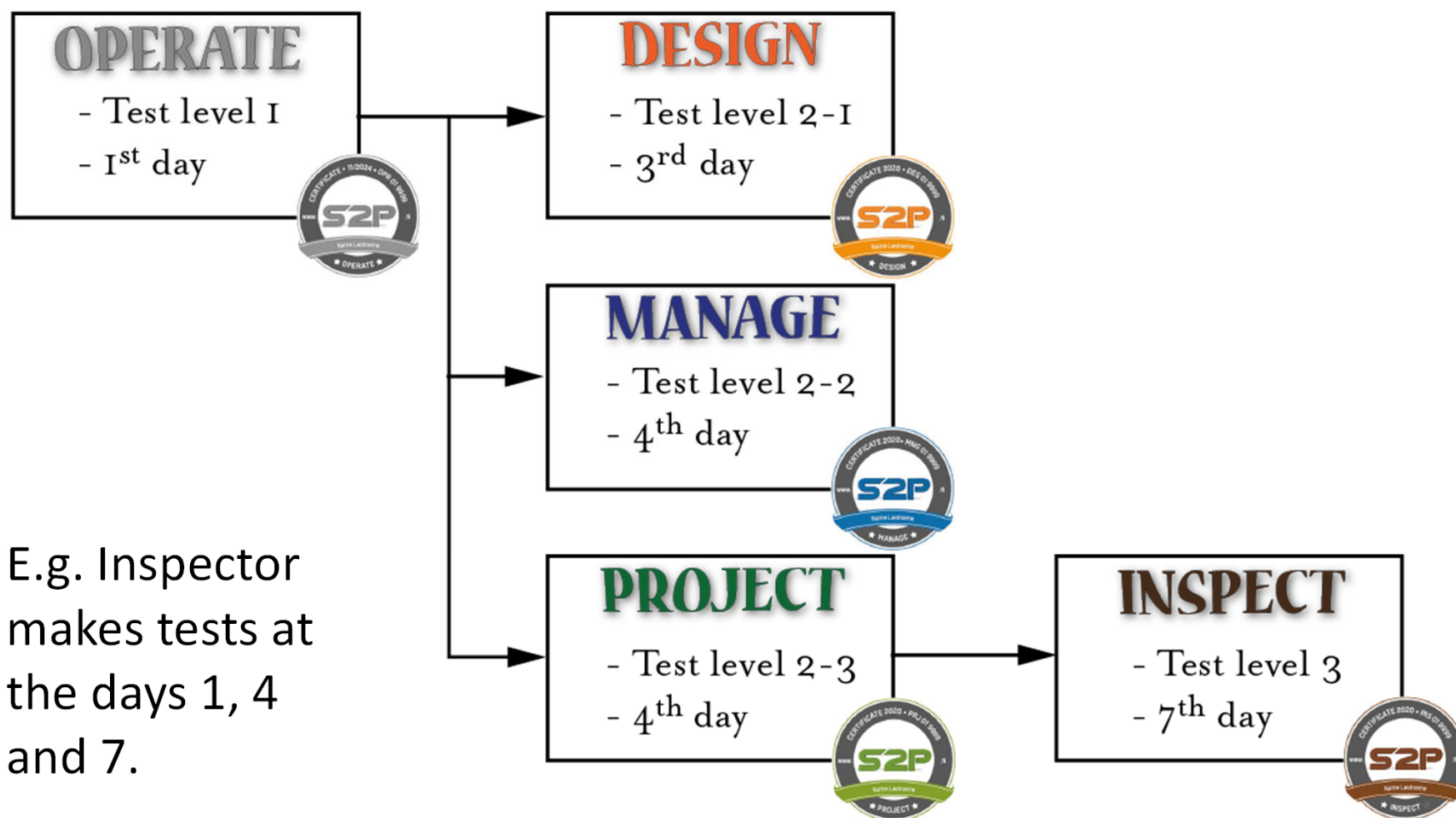
Advanced level

Day 5: Systematic risk assessment

Day 6: Intuitive risk assessment

Day 7: Making inspections and in being safety expert

S2P -test system



E.g. Inspector makes tests at the days 1, 4 and 7.

Day 1



Day 2



Day 3



Day 4



Day 5



Day 6



Day 7



Maintenance training +
Operate certification

- Maintenance and operational inspections
- Installation works



Day 1



Day 2



Day 3



Day 4



Day 5



Day 6



Day 7



Layout design training +

Design certification

- Designing layouts
- Leading installation teams



Day 1



Day 2



Day 3



Day 4



Day 5



Day 6



Day 7



Safety management training +
Manage certification

- Managing areas



Day 1



Day 2



Day 3



Day 4



Day 5



Day 6



Day 7



Basic level training +
Project certification

- Managing building projects
- Selling and purchasing equipment



Day 1	Day 2	Day 3	Day 4	Day 5	Day 6	Day 7
www.S2P.fi	www.S2P.fi	www.S2P.fi	www.S2P.fi	www.S2P.fi	www.S2P.fi	www.S2P.fi

Inspector training +
Inspect certification

- Annual and post installation inspections
- Other safety tasks:
 - Pre-installation inspection
 - Mid-installation survey
- Lays foundation for further development as an expert



Day

1

Operational inspections and maintenance

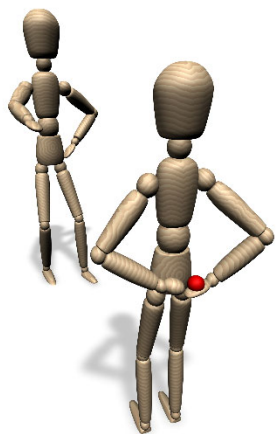
Period

1

Preview

In this period, we are going to learn:

- Safe to Play –training's structure, S2P testing and maintaining competence.
- Why the working with recreational areas is important and valuable?
- Understanding responsibilities.





Day

1

Operational inspections and maintenance

Period

2

Preview

In this period, we are going to learn:

- How are entrapments tested?
- What means easy access and what's its significance?
- How is falling height determined and what's its significance?



Day

1

Operational inspections and maintenance

Period

3

Preview

In this period, we are going to learn:

- Basic properties of common materials used in recreational areas.
- Why routine maintenance and corrective maintenance are needed.



Day

1

Operational inspections and maintenance

Period

4

Preview

In this period, we are going to learn:

- What is safety area and how impact attenuation relates to it.
- How space for sports equipment differs from play equipment's safety area.
- Basics of risk assessment.
- Operate level certification test.



Day

2

Requirements in the standards

Period

1

Preview

In this period, we are going to learn:

- Requirements for hand holds.
- Basic requirements for certain components:
 - Ramp, stairs, ladders, fireman's pole, heavy suspended beams, tunnels, roofs.





Day

2

Requirements in the standards

Period

2

Preview

In this period, we are going to learn:

- Requirements for swings, slides, cableways and carousels.



Day

2

Requirements in the standards

Period

3

Preview

In this period, we are going to learn:

- Requirements for rocking equipment, fully enclosed play equipment, spatial networks, bouncing facilities.
- Safety of original new equipment.



Day

2

Requirements in the standards

Period

4

Preview

In this period, we are going to learn:

- What is the difference between “Real sports” and “recreational sports”?
- What are the requirements for Ball-game arenas, Skate parks, Fitness equipment, Parkour facilities, Bouldering walls, Goals, Basketball stands, Table tennis tables and Senior sport equipment?



Day

3

Layout designing

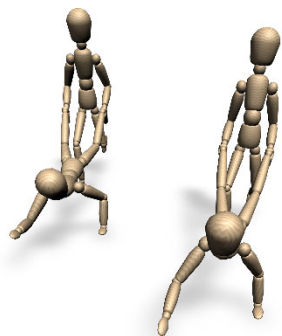
Period

1

Preview

In this period, we are going to learn:

- How to assess the risk level of any equipment?
- How to choose suitable equipment for each area?
- How to separate areas with different risk levels?
- How to consider accessibility in both area and equipment levels?
- How to reduce vandalism?





Day

3

Layout designing

Period

2

Preview

In this period, we are going to learn:

- How to determine age range and why the designer should do it?
- How to calculate equipment capacity and to compare it to area capacity.
- Rules that allow optimizing of safety areas.



Day

3

Layout designing

Period

3

Preview

In this period, we are going to learn:

- How equipment and ancillary items make together the area?
- How surroundings and weather are considered?



Day

3

Layout designing

Period

4

Preview

In this period, we are going to learn:

- How EN 1176 helps to assess surfacing's impact attenuation?
- What are pros and cons of each surfacing material?
- What anthropometric data is and how to use it in design and risk assessment?
- Design level certification test.



Day

4

Period

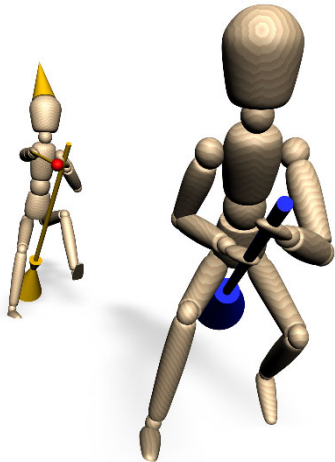
1

Area management

Preview

In this period, we are going to learn:

- How laws and standards together lay basis for responsibilities and risk assessment
- What is the role of certification?
- How to deal with conflicting situations?





Day

4

Area management

Period

2

Preview

In this period, we are going to learn:

- What liability means?
- How to take care of safety throughout construction projects?



Day

4

Area management

Period

3

Preview

In this period, we are going to learn:

- What is inspections and maintenance plan?
- What are different types of inspections?
- What is risk management?



Day

4

Area management

Period

4

Preview

In this period, we are going to learn:

- What documents should be archived?
- How to make safety management in organised manner?
- Manage and Project levels' certification tests.



Day

5

Systematic risk assessment

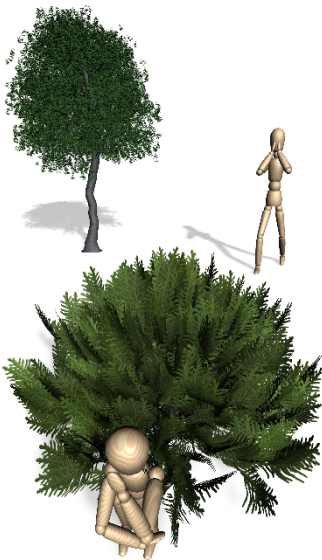
Period

1

Preview

In this period, we are going to learn:

- How risk assessment inspection differs from compliance inspection?
- What are benefits from risk assessment?





Day

5

Systematic risk assessment

Period

2

Preview

In this period, we are going to learn:

- How to make systematic risk assessment?
- What risk assessment is and what it is not?



Day

5

Systematic risk assessment

Period

3

Preview

In this period, we are going to learn:

- How to train own intuition to make risk assessment without calculations?
- How safety requirements differ around the world?
- How impact attenuation is tested and how to assess risks related to it?



Day

5

Systematic risk assessment

Period

4

Preview

In this period, we are going to learn:

- What kind of structural strength tests are done for playground equipment?
- What kind of structural strength tests are done for sports equipment?



Day

6

Intuitive risk assessment

Period

1

Preview

In this period, we are going to learn:

- What are the basic principles behind most of safety requirements?

Rest of the safety requirements for playground equipment (those not covered at first day) and their risk assessment.





Day

6

Intuitive risk assessment

Period

2

Preview

In this period, we are going to learn in general and component levels:

- What is the hazard and what is the risk?
- What increases or decreases the risk level?



Day

6

Intuitive risk assessment

Period

3

Preview

In this period, we are going to learn in equipment level:

- What is the hazard and what is the risk?
- What increases or decreases the risk level?



Day

6

Intuitive risk assessment

Period

4

Preview

In this period, we are going to learn:

- What are the risks related to impact areas?
- How to systematically determine the levels of risks within impact areas?



Day

7

Making inspections

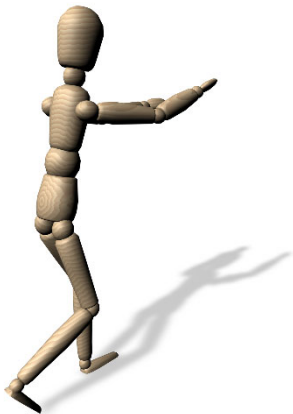
Period

1

Preview

In this period, we are going to learn:

- What responsibility lies in working as safety expert?





Day

7

Making inspections

Period

2

Preview

In this period, we are going to learn:

- How to identify hazards and assess risks in the field?



Day

7

Making inspections

Period

3

Preview

In this period, we are going to learn:

- How to use the Safe to Play -template for annual inspection report?
- How to use the Safe to Play -template for post-installation inspection report?
- How to make systematic risk assessment using Safe to play –template?



Day

7

Making inspections

Period

4

Preview

- In this period, we are going to have questions and answers before S2P Inspect certification test.
- Inspect level certification test.